

The New Authentic SUV
REXTON



KIARONG
Unit 1-4, 1st Floor, Bangunan Kiarong Sentral , Simpang 22,
Jalan Dato Ratna, Kampong Kiarong
Tel. No. (+673) 242-6868

KB
Lot 69 & 70 Simpang 57
Tapak Perindustrian
Sg. Duhon, Kuala Belait
Tel. No. (+673) 333-9400

@bruneissangyong

@ssangyongbrunei

Some of the equipment shown in this brochure is optional and may not be available on all models or in all markets. All specifications are subject to change without notice. Please contact your local dealer for the latest information.



SYMC 201808 RHD (General) ENGLISH Printed in KOREA

REXTON

A SOLID PERFORMER WITH CHARISMATIC FLAIR

Going all out to lead the segment

The Rexton is now safer, stronger, more spacious, and more stylish than ever. This New authentic SUV drives wonderfully, while the technology inside has reached new heights of sophistication for your convenience, enjoyment and protection.





High-intensity-discharge headlamps for better night vision; LED daytime running lights, positioning lamps and directional indicators grouped in the upper lamp housing for simplicity and elegance



Side repeater and puddle lamp mounted on the back of the outside mirror



LED cornering light function combined with fog lamp

MUSCULAR SUV WITH MAJESTIC CURVES

Retaining the SUV legacy while creating a unique style

The Rexton's shoulder-wing design of radiator grille and rugged front lines project the classic SUV look, while the dynamic character line along the sides add stately beauty. The bold yet sophisticated feel is underscored by the front bumper outlined in chrome; the black, high-gloss skid-plate; and the side repeater and puddle lamp built onto the back of the side mirror.

DYNAMIC YET SIMPLE

Displaying a distinctive look in the back

The spoiler with high-mounted auxiliary stop light highlights the Rexton's sportiness while improving safety, and the rear combination lamps are laid out horizontally to project width and a more imposing image from behind. A strip of chrome moulding crosses the tailgate center for added refinement, and the muffler has been hidden to enhance the overall simplicity of the rear design. The license plate illuminated by LED lights and the clean-sill doors provide the perfect finishing touches to the exterior.



LED rear combination lamps



Rear license plate softly illuminated by LED lights



Clean-sill door



SUMPTUOUSLY REFINED YET COZY



Brown seats

Using quality materials that set the cabin apart

The seats are ergonomically designed to conform to the shape of each body, thereby mitigating feelings of fatigue on long trips. They are covered in incredibly soft and relaxing Nappa leather that has been elegantly quilted. The interior ambience is further enhanced by the illuminated front door scuff, and lamps built into the instrument panel and door trim to create a subtle ambient light at night.

The interior package is available in four color schemes:

- Brown
- Black
- Black with beige headlining
- Ivory



Black seats



Black seats with beige headlining

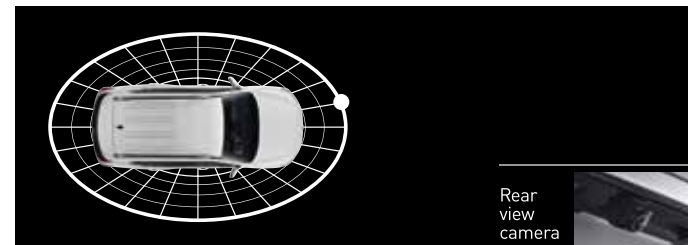


Ivory seats

A PLEASURE TO DRIVE AND RIDE IN

Providing a full view of the environment outside

A camera have been mounted on the rear to provide a real-world view of the area on rear side of the vehicle, making low-speed driving or parking safer and easier. Moreover, the angle of the outside mirrors automatically tilts downward when the vehicle is put in reverse to assist the driver with parking.



Rear view camera

Offering a rich infotainment environment inside

Rexton's infotainment system comes a standard-definition touchscreen, which supports Apple CarPlay and Google Android Auto. System features also include radio and MP3 player functions, real-time broadcast recording, and a USB port.



Speed-sensing power steering & heated steering wheel cover



Electronic parking brake with auto-hold function

APPLE CARPLAY AND GOOGLE ANDROID AUTO

Users may connect their smart phone to the display to make phone calls, check messages and listen to music while on the road.



SUPER-VISION CLUSTER



7" colour TFT-LCD display

TRIPLE-MODE DIGITAL SPEEDOMETER DISPLAY



Regular mode



Animation mode



RPM-linked mode

TRIP COMPUTER DISPLAY



Turn signal sound selection



Lane departure warning system



Smart power tailgate

SPACIOUS AND FLEXIBLE

Offering comfort and roominess to driver and passengers alike

Both seats in the first row are ventilated, while the seats in both the first and second rows are heated. Up to three different drivers can input their preferred settings for the driver's seat and mirror positions, and both seats in front are power-adjustable. Legroom in the second row is outstanding, thanks to an optimized spatial design of the interior, and the second-row seats may be double-folded to maximize cargo-carrying capacity.

SEATING CONFIGURATIONS FOR 5-SEATER

2nd row 40% flat (1,376L)



2nd row 60% flat (1,652L)



2nd row 100% flat (1,977L)



5 seater



7 seater

Folding seats to carry extra-long items

The second-row seat may also be double-folded to allow easy access to the third row.

SEATING CONFIGURATIONS FOR 7-SEATER

3rd row flat, 2nd row 40% flat (1,201L)



3rd row flat, 2nd row 60% flat (1,477L)



3rd row folded 50%, 2nd row folded flat 40% (777L)



3rd row folded 50%, 2nd row folded flat 60% (1,029L)



3rd row flat, 2nd row 100% flat (1,806L)





SMART POWER TAILGATE
 - Heavy tailgate opens and closes easily
 - Simple switch control

EASY TO LOAD AND UNLOAD

Hauling more without sacrificing passenger space

Rexton can fit four golf bags widthwise in the cargo bay, thereby leaving the 2nd-row seats free for passengers to use.

The driver with arms full may open the tailgate without putting the items down. Simply keep the smart key in a pocket and stand near the back of the vehicle for just three seconds and the tailgate will pop open automatically.



2nd row folded flat 100% (5 seater)



Normal seating with luggage board raised (5 seater)



SAFER AND EASIER TO OPERATE

Employing electronics to anticipate and avoid accidents

Driving always entails a certain amount of risk. However, the Rexton takes advantage of all the latest active safety systems to minimise such risk and keep potential accidents from occurring.

THE LATEST TECHNOLOGICAL SOLUTIONS



Forward Collision Warning (FCW)
Alerts the driver when another vehicle or pedestrian appears in the path of the vehicle.

DIESEL OR PETROL, IT'S YOUR CHOICE


Maintaining SUV authenticity with 4WD availability

The Rexton comes with either a 2.2L diesel engine or a 2.0L petrol, and the diesel option includes independent multilink suspension in the rear. The towing capability is as high as three tons with the diesel engine. Normally the vehicle runs in rear-wheel drive, which enhances handling stability by optimising weight distribution.



E-Tronic 7-speed automatic transmission (diesel engine)



	
Max. Power 181Ps/4,000rpm	Max. Power 225Ps/5,500rpm
Max. Torque 420Nm/1,600~2,600rpm	Max. Torque 350Nm/1,500~4,500rpm
Displacement 2,157cc	Displacement 1,998cc
Diesel Engine Model e-XDi220	Petrol Engine Model e-XGDi200T
* With automatic transmission	

INDEPENDENT MULTILINK SUSPENSION IN THE REAR

Independent suspension allows each wheel to move up, down, left, and right on its own for secure handling when the road surface gets rough. Shock from the road surface is dissipated through multiple links; little vibration is transferred to the body, and the ride quality is superb.



*Diesel engine only

SOLID AND DEPENDABLE

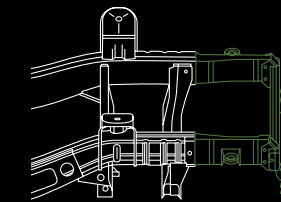


APPLYING THE MOST ADVANCED AUTOMOTIVE HIGH-STRENGTH STEEL

High-density, high-tensile-strength steel plate makes up 81.7% of all the steel plate used in the Rexton's body, providing superb rigidity and protection against deformation in a collision. As such, the safe space within the cabin has been maximised.

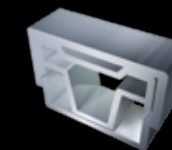
Keeping both noise and energy outside the cabin

The Rexton's body is mounted on the new-concept 'Quad Frame,' which blocks most of the noise from the road surface and engine. The frame has been engineered specifically to minimise the possibility of injury to vehicular occupants in a collision. The body has been reinforced as well with stronger materials and expanded section sizes. In addition, the Rexton now has eight body mounts, the most in its class, improving ride quality and steering stability.



CRASH ZONE BOX

The 'crash zone' refers to that part of frame that conveys the most shock from a frontal collision to the inside of the cabin. This 'box' is designed to absorb that force, thereby protecting the people inside.



QUAD FRAME

The frame members feature a quadruple-layered structure that exceeds the global standard for lateral collision safety.



MORE PROTECTION THAN EVER



Improving the safety of all occupants

The Rexton comes equipped with nine airbags, including a driver knee-airbag and second-row side airbags. The steering wheel and steering column are specially designed to absorb the force of a collision, minimising the effect on the driver's chest area.



Emergency Stop Signal (ESS)



Hill Descent Control (HDC)



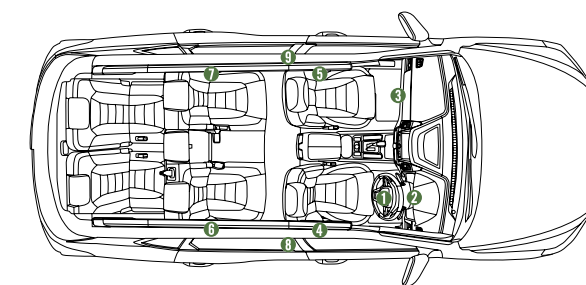
Hill Start Assist (HSA)



Electronic Stability Programme (ESP) & Anti-Rollover Protection (ARP) & Brake Assist System (BAS)

9 AIRBAGS

- 1 Driver's airbag
- 2 Driver's knee protection airbag
- 3 Passenger's airbag
- 4, 5 Driver's & passenger's side airbags
- 6, 7 Rear seat side airbags
- 8, 9 Curtain airbags



A STANDOUT SUV

Building a proud legacy

The Rexton is a better choice, everywhere you look. The frame body is unrivalled in strength and the interior is luxurious and roomy. Towing capacity is great, while the many driving assist systems and suspension system are designed to ensure the safest and smoothest ride possible. And the list just keeps going. The SUV you would be truly proud to own.



E.X.T.E.R.I.O.R S.T.Y.L.E



Remote-controlled windows with smart key



Automatic closing system



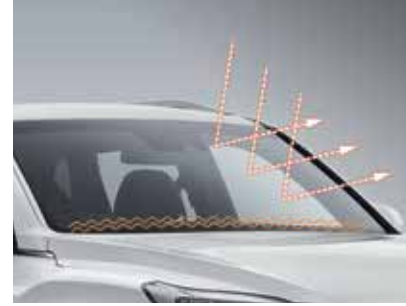
Headlamp escort function



Welcome system



Safety powered window



Tinted, noise-control glass and wiper deicer



Fashionable roof rails



Parking assist system



Tyre repair kit

C.O.N.V.E.N.I.E.N.C.E



Cluster with 3.5" trip computer



Remote control switches and cruise control system on the steering wheel



Tilt and telescopic steering wheel system



8" smart audio



Headlamp control and automatic washer switches



Memory profile system for driver



Dual-zone fully automatic air-conditioner; 3rd row air conditioner



Easy access mode



Heated front and rear seats



Ventilated and powered front seats



Passenger's seat walk-in device



Driver's seat power lumbar support

C.O.N.V.E.N.I.E.N.C.E



Integrated switch module



Front camera module with rain-sensing and automatic light control unit



Overhead console



Rear armrest



Glove box and centre console box



1st row doors



2nd row doors

Map pocket



Cargo bay pocket



Luggage cover and luggage net (5 seater only)



USB port and power outlet on centre console, USB port and 220V/115V inverter in 2nd row



smart key

C.O.L.O.U.R G.U.I.D.E

INTERIOR COLOUR

WHEELS

20" Sputtering Wheel



18" Alloy Wheel, Diamond Cut



EXTERIOR COLOUR

Grand White (WAA)



Silky White Pearl (WAK)



Fine Silver (SAF)



Elemental Grey (ACY)



Atlantic Blue (BAU)



Sabbia Beige (EBE)



Space Black (LAK)



Brown

Nappa leather



Black with beige headlining

TPU (thermoplastic polyurethane)

Flat woven

FEATURES LIST

MECHANICAL

e-XDi 220 2.2L diesel engine
e-XGDi 200T 2.0L petrol engine (Euro 4 / Euro 6)
6-speed manual transmission with gear shift indicator
7-speed automatic transmission with thumbs-up switch on gearshift knob (Available with diesel engine)
6-speed automatic transmission with thumbs-up switch on gearshift knob (Available with petrol engine)
Double-wishbone front suspension system with coil springs
Five-link rear suspension system with coil springs
Impact-absorbing 10-link rear suspension (available with automatic transmission)
Ventilated disc brakes for front and rear
Electronic parking brake with auto-hold function
70L fuel tank
Trailer hitch mounting

INTERIOR

Sunvisors with illumination and sliding extension
Glove box with lamp and key lock
Mobile ashtray
A-pillar cloth trim
B-pillar assist grip
Stainless steel scuff on front & rear doors
Illuminated front-door scuff
Leather-wrapped gear knob for manual transmission
LED lamps in cabin
Chrome inside door handle
Floor mats

STEERING

Hydraulic power steering
Speed-sensitive power steering
Leather steering wheel cover with silver or high-gloss black accent
Manually controlled tilt and telescopic steering
Steering column lock
Heated steering wheel cover

EXTERIOR

Chrome coated on radiator grille
Modulized projection headlamps
25W high-intensity discharge(HID) headlamps
High-glossy skid plate under front & rear bumpers
Outside rearview mirrors with side repeater and puddle lamp
Integrated LED front fog & cornering lamps
LED rear combination lamp with light guide
Air spoiler with LED high-mounted stop lamp
LED license plate lights
Aero-blade wipers
Body color outside door handles with hidden key button
Clean-sill door
Invisible muffler
Fashionable black and silver roof rails
Rear fog lamps
Daytime running lamps

SEATS

8 way power-adjustable driver's seat
6 way power-adjustable front passenger's seat
Driver's seat power lumbar support
Passenger's seat walk-in device
60:40 split folding 2nd-row seats with folding centre armrest
50:50 split folding 3rd-row seats
Seat memory settings for three drivers, including seat & outside door mirror positions, stored in onboard memory
Automatic easy access mode for driver's seat
Heated seats for front and rear
Ventilated seats in front
Sliding front headrests
Premium Nappa brown leather seat upholstery
TPU (thermoplastic polyurethane) seat upholstery
Flat woven seat upholstery
Double-folding seats in 2nd-row

SAFETY

Forward collision warning (FCW)

High-strength-steel construction
Ultra-rigid Quad Frame for greater strength, less vibration and noise
Door impact beams for added protection from side collisions
4-channel anti-lock braking system
Electronic stability programme (ESP) with traction control system (TCS), hill descent control (HDC), active roll-over protection (ARP) and emergency stop signal (ESS)

Dual airbags for driver and front passenger
Side airbags for front and rear passengers
Curtain airbags for front and rear passengers
Driver's knee airbag
Front seatbelt load limiters and pre-tensioners
2nd row 3-point seatbelt
Airbag on/off switch for front passenger
Seatbelt reminder for the driver and front passenger
Manual seatbelt height adjustment on B-pillar
Childproof safety lock
Speed-sensitive door lock
Visual VIN

AIR CLIMATE

Automatic air conditioning system (dual-zone control)
Rear manual air conditioning system for 7 seater
Automatic defogging system
Cabin air quality control system
Cluster Ionizer
Rear air vent on centre console
Positive temperature coefficient (PTC) heater with diesel engine

WHEEL AND TYRE

18" alloy wheels 255/60 tyres (diamond cut)
20" sputtering wheels 255/50 tyres (chrome finish)
Tyre repair kit
Full size spare tyre

CONVENIENCE

Electronic cruise control
Windshield wiper de-icer
Electro-chromic inside rearview mirror
Headlamp leveling device
Intermittent rear wiper
Automatic light control and rain-sensing wipers in front
Outside door mirrors that can be electrically controlled, folded and heated
Tinted, noise-control windshield glass
Tinted front-door glass
Privacy glass
(Rear-door windows, Quarter windows, Tailgate window)
Safety powered windows
One-touch triple-turn signal lamp
Supervision cluster with 7" colour TFT-LCD trip computer
Supervision cluster with 3.5" Mono TFT-LCD trip computer
Luggage cover and load net & grocery hook in cargo bay (5 seater)

Variable luggage shelf
Cargo bay net
Standard 8" smart audio with rear-view camera
Six speakers
USB and AUX. slot
Bluetooth telephone connectivity with streamed audio
Audio remote control switches on steering wheel

Car connectivity (Apple Carplay & Google Android Auto)
Smart power tailgate
Front obstacle warning system (4 sensors) with 2-stage alarm
Rear obstacle warning system (4 sensors) with 3-stage alarm

Dual smart-key system with window control and auto closing function
2-channel touch sensing door handle
12V power outlets & USB charger on console back
220V power inverter

TECHNICAL DATA

ENGINE		Diesel 2.2 (5-seater)		Petrol 2.0 (7-seater)		
DRIVEN WHEELS		2WD		2WD		
TRANSMISSION		7AT		6AT		
EXTERIOR DIMENSIONS	Overall length	mm	4,850	4,850		
	Overall width	mm	1,960	1,960		
	Overall height	mm	1,825 (with roof rack)	1,825 (with roof rack)		
	Wheelbase	mm	2,865	2,865		
	Tread	Front	mm	1,640	1,640	
		Rear	mm	1,640	1,640	
	Overhang	Front	mm	895	895	
		Rear	mm	1,090	1,090	
	Minimum ground clearance	mm	224 (with IRS) / 203 (with 5-link rear suspension)	203 (with 5-link rear suspension)		
	Minimum turning radius	m	5.5	5.5		
WEIGHT	Gross vehicle weight	kg	2,750	2,830		
	Kerb weight	kg	2,005-2,175	2,010-2,156		
	Gross trailer weight	Braked	kg	2,700	2,700	
Unbraked		kg	750	750		
ENGINE	Fuel	-	Diesel	Petrol		
	Fuel tank	L	70	70		
	Capacity	cc	2,157	1,998		
	Bore X stroke	mm	86.2 X 92.4	86 X 86		
	Compression ratio	-	15.5:1	9.6 : 1		
	Number of cylinders	-	4 in-line	4 in-line		
PERFORMANCE	Max. power	kW/rpm	133.1 /4,000	165 / 5,500		
		ps/rpm	181 /4,000	225 / 5,500		
	Max. torque	Nm/rpm	420 / 1,600-2,600	350 / 1,500-4,500		
		kg.m/rpm	42.8 / 1,600-2,600	35.7 / 1,500-4,500		
Max. speed	km/h	185	185			
FUEL CONSUMPTION	Urban	L/100km	10.1	13.9		
	Extra urban	L/100km	6.8	8.4		
	Combined	L/100km	8.0	10.4		
	CO ₂ (combined)	g/km	211	242		

• The fuel economy can vary according to road conditions or driver's habits. • The above technical data can vary slightly by regional certification requirements or sales specifications.

DIMENSIONS



*Some of features may be optional or not be available according to market. Please contact your local dealer for the exact details regarding vehicles sold in your area.